

RP Data Weekend Market Summary

All data to week ending 26 October 2014

Capital city home value changes

Capital city	Weekly change	Monthly change	Yr to date change	Annual change
Sydney	0.2%	1.6%	11.2%	13.1%
Melbourne	0.1%	2.0%	8.5%	9.3%
Brisbane	0.5%	0.8%	3.9%	6.2%
Adelaide	-0.7%	-1.3%	2.6%	4.7%
Perth	0.0%	1.4%	0.8%	5.0%
Combined 5 capitals	0.1%	1.4%	7.6%	9.5%

*Brisbane results are for the combined Brisbane and Gold Coast region. The monthly change is the change over the past 28 days.

Results are based on the RP Data CoreLogic Daily Home Value Index. Further information and daily updates on the index results are available from http://www.rpdata.com/research/daily_indices.html.

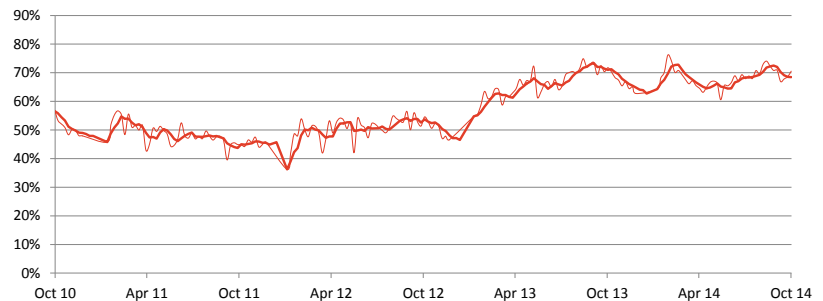
Daily change in dwelling values across five combined capitals



Capital city auction statistics (preliminary)

City	Clearance rate	Total auctions	RP Data auction results	Cleared auctions	Uncleared auctions
Sydney	78.1%	943	699	546	153
Melbourne	70.6%	1,819	1,535	1,083	452
Brisbane	50.6%	205	83	42	41
Adelaide	55.6%	126	81	45	36
Perth	28.6%	23	7	2	5
Tasmania	100.0%	15	4	4	0
Canberra	58.3%	54	36	21	15
Weighted Average	70.5%	3,185	2,445	1,743	702

Weekly clearance rate, combined capital cities

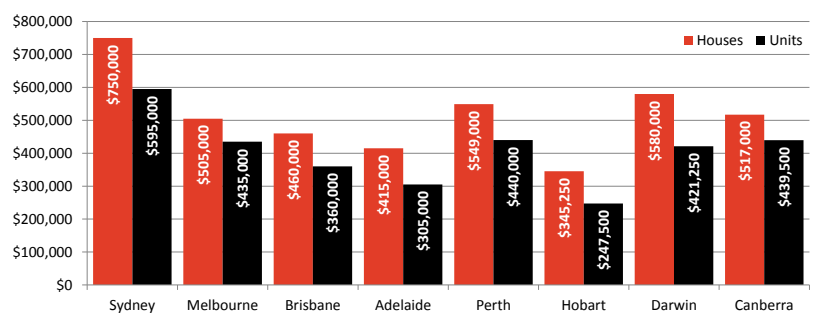


The above results are preliminary, with 'final' auction clearance rates published each Thursday. RP Data, on average, collects between 85% and 90% of auction results each week. Clearance rates are calculated across properties that have been taken to auction over the past week.

Capital city private treaty median prices

Capital city	HOUSES		UNITS	
	Number of Sales	Median price	Number of Sales	Median price
Sydney	2,654	\$750,000	1,535	\$595,000
Melbourne	2,483	\$505,000	983	\$435,000
Brisbane	1,297	\$460,000	313	\$360,000
Adelaide	495	\$415,000	127	\$305,000
Perth	771	\$549,000	183	\$440,000
Hobart	142	\$345,250	30	\$247,500
Darwin	33	\$580,000	38	\$421,250
Canberra	133	\$517,000	49	\$439,500
Combined Capitals	8,008	\$575,258	3,258	\$496,572

Median house and unit prices



Private treaty sales represent around 85% of all dwelling sales across the country. The statistics are calculated across houses and units sold over the most recent four week period. Records without a valid sale price have been excluded from the analysis and median prices are withheld for cities where fewer than ten sales have been recorded.

RP Data Weekend Market Summary

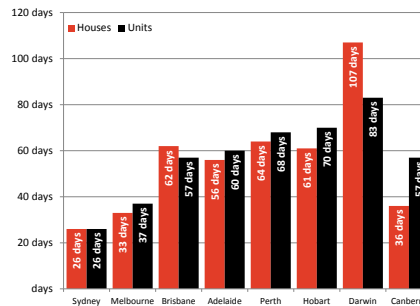
All data to week ending 26 October 2014

Capital city average time on market and vendor discounting results

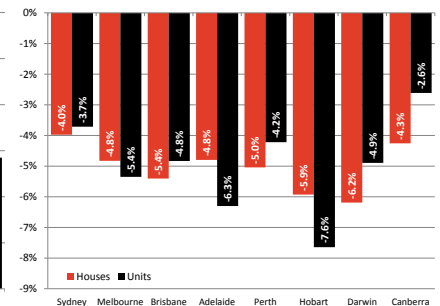
Capital city	HOUSES		UNITS	
	Avg TOM	Avg Vendor Disc.	Avg TOM	Avg Vendor Disc.
Sydney	26 days	-4.0%	26 days	-3.7%
Melbourne	33 days	-4.8%	37 days	-5.4%
Brisbane	62 days	-5.4%	57 days	-4.8%
Adelaide	56 days	-4.8%	60 days	-6.3%
Perth	64 days	-5.0%	68 days	-4.2%
Hobart	61 days	-5.9%	70 days	-7.6%
Darwin	107 days	-6.2%	83 days	-4.9%
Canberra	36 days	-4.3%	57 days	-2.6%

'Time on market' (TOM) is simply the average number of days between when a property is first listed for sale and the contract date. The rate of vendor discounting is the average percentage difference between the original listing price and the final selling price. The statistics are calculated across results received by RP Data over the past week and include properties transacted over the past four weeks. The data is based on private treaty sales only and records without a valid sale price have been excluded from the vendor discount analysis. The analysis also excludes results where there are less than 10 observations.

Time on market



Vendor discounting



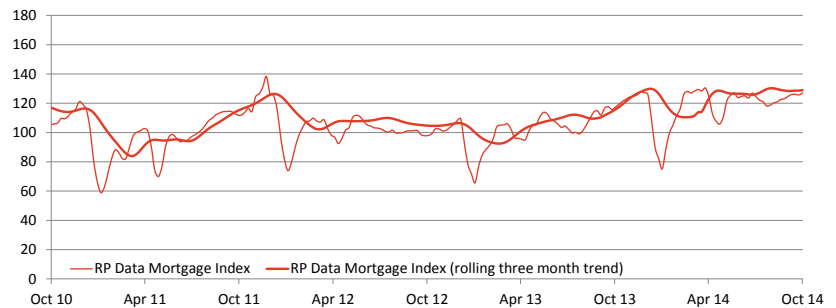
Mortgage market activity

Region	Index value	Month on month change	Month on month change (trend)
National	127.0	1.9%	0.4%
NSW	168.1	2.9%	2.1%
QLD	124.5	1.2%	0.8%
SA	82.7	-0.1%	-2.3%
TAS	78.1	-7.8%	-1.8%
VIC	136.2	5.2%	1.1%
WA	97.4	-5.7%	-2.7%

*Please note figures have been carried over from last week.
The latest data will be updated within our weekly stats on Monday.

RP Data systems monitor more than 100,000 mortgage activity events every month across our 4 main finance industry platforms. Monitoring the activity events across this platform provides a unique and timely lead indicator to housing finance commitments. The index shows an 81% correlation with the ABS housing finance data series (88% using the seasonally adjusted series). Based on the strong correlation and significant number of events being monitored, the Mortgage Index provides the most timely and holistic measure of mortgage market activity available.

RP Data Mortgage Index - RMI

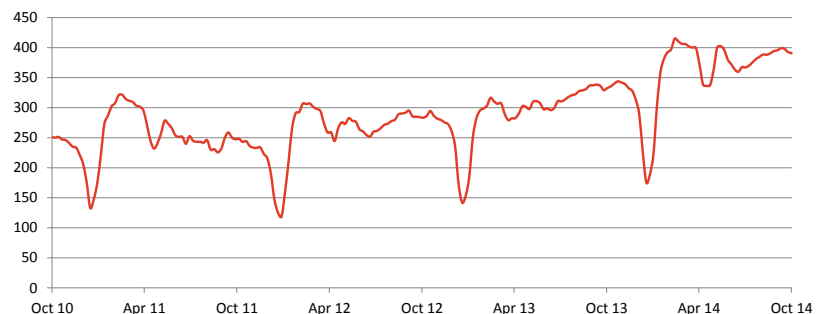


New listings activity

Region	Index value	Month on month change	Month on month change (seas adj)
National	390.8	-1.2%	2.5%
NSW	448.0	-1.7%	2.5%
QLD	298.8	-3.1%	1.5%
SA	350.9	-0.8%	3.2%
TAS	163.5	9.8%	1.2%
VIC	475.6	1.5%	4.7%
WA	460.2	-3.7%	1.7%

*Please note figures have been carried over from last week.
The latest data will be updated within our weekly stats on Monday.

RP Data Listings Index - RLI



The RP Data Listings Index provides a lead indicator for the number of residential dwellings that are being prepared for sale across the Australian housing market. RP Data customers account for over 70% of all listings in the Australian property market. The index, which tracks the flow of metadata across RP Data's real estate data platform, shows a 75% correlation with the number of new listings about to enter the market.

RP Data Weekend Market Summary

All data to week ending 26 October 2014

About RP Data

RP Data is a wholly owned subsidiary of CoreLogic (NYSE: CLGX), a leading global property information, analytics and data-enabled services provider. Regionally RP Data is part of CoreLogic Asia which is a leading property information, analytics and services provider in Australia and New Zealand with growing partnerships throughout Asia.

With Australia's most comprehensive property databases, the company's combined data offering is derived from public, contributory and proprietary sources and includes over 500 million decision points spanning over three decades of collection, providing detailed coverage of property and other encumbrances such as tenancy, location, hazard risk and related performance information. With over 11,000 customers and 120,000 end users, RP Data is the leading provider of property data, analytics and related services to consumers, investors, real estate, mortgage, finance, banking, insurance, developers, wealth management and government. RP Data delivers value to clients through unique data, analytics, workflow technology, advisory and geo spatial services. Clients rely on RP Data to help identify and manage growth opportunities, improve performance and mitigate risk. CoreLogic Asia employs over 500 people at ten locations across Australia and in New Zealand. For more information call 1300 734 318 or visit www.rpdata.com

Disclaimers

© 2014 Copyright RP Data Ltd, Local, State, and Commonwealth Governments. All rights reserved. No reproduction, distribution or transmission of the copyrighted materials in this publication is permitted whether in whole or in part. The copyrighted materials in this publication are provided for personal or internal business purposes only.

The information provided in this publication is current as at the publication date only. This publication is supplied on the basis that while RP Data believes all the information in it is deemed reliable at the publication date, it does not warrant its accuracy or completeness and to the full extent allowed by law excludes liability in contract, tort or otherwise, for any loss or damage sustained by yourself, or by any other person or body corporate arising from or in connection with the supply or use of the whole or any part of the information in this publication through any cause whatsoever and limits any liability it may have to the amount paid to RP Data for the supply of such information.

This publication provides general information only – it is not intended as advice and should not be relied upon as such. The material has not been prepared by taking into account your investment objectives, financial situation or personal needs. You should make your own inquiries and if necessary take independent financial advice tailored to your specific circumstances before making any investment decisions.

Queensland Data

Based on or contains data provided by the State of Queensland (Department of Natural Resources and Mines) 2014. In consideration of the State permitting use of this data you acknowledge and agree that the State gives no warranty in relation to the data (including accuracy, reliability, completeness, currency or suitability) and accepts no liability (including without limitation, liability in negligence) for any loss, damage or costs (including consequential damage) relating to any use of the data. Data must not be used for direct marketing or be used in breach of the privacy laws.

South Australian Data

This information is based on data supplied by the South Australian Government and is published by permission. The South Australian Government does not accept any responsibility for the accuracy or completeness of the published information or suitability for any purpose of the published information or the underlying data.

New South Wales Data

Contains property sales information provided under licence from the Land and Property Information ("LPI"). RP Data is authorised as a Property Sales Information provider by the LPI.

Victorian Data

To the extent that this report has been developed using information owned by the State of Victoria, the State of Victoria owns the copyright in the Property Sales Data which constitutes the basis of this report and reproduction of that data in any way without the consent of the State of Victoria will constitute a breach of the Copyright Act 1968 (Cth). The State of Victoria does not warrant the accuracy or completeness of the information contained in this report and any person using or relying upon such information does so on the basis that the State of Victoria accepts no responsibility or liability whatsoever for any errors, faults, defects or omissions in the information supplied.

Western Australian Data

Based on information provided by and with the permission of the Western Australian Land Information Authority (2014) trading as Landgate.

Australian Capital Territory Data

The Territory Data is the property of the Australian Capital Territory. No part of it may in any form or by any means (electronic, mechanical, microcopying, photocopying, recording or otherwise) be reproduced, stored in a retrieval system or transmitted without prior written permission. Enquiries should be directed to: Director, Customer Services ACT Planning and Land Authority GPO Box 1908 Canberra ACT 2601.

Tasmanian Data

This product incorporates data that is copyright owned by the Crown in Right of Tasmania. The data has been used in the product with the permission of the Crown in Right of Tasmania. The Crown in Right of Tasmania and its employees and agents:

- a) give no warranty regarding the data's accuracy, completeness, currency or suitability for any particular purpose; and
- b) do not accept liability howsoever arising, including but not limited to negligence for any loss resulting from the use of or reliance upon the data.

Base data from the LIST © State of Tasmania <http://www.thelist.tas.gov.au>